



Hüsches Gruppe®  
Die Gutachter

# Overall note: "1,7"

BMW model range 3 Touring (E91)

(2005->) First Registration: 22.04.2010

mileage read:

140583

## vehicle condition - Average Mark



## state - technique

air conditioning	in order
Alternator / Generator	in order
Battery / accumulator	in order
coupling	in order
lighting system	in order
engine running	in order
shock absorber	examined limited
transmission	in order

## grading - technique

	1	2	3	4	5	6	
brake system	✓						very good
exhaust System	✓						very good
oil loss	✓						very good

## grading - exterior

	1	2	3	4	5	6	
outer body	✓						very good
glazing	✓						very good
paintwork	✓						very good
rims	✓						very good
tires	✓						very good

## grading - inside

	1	2	3	4	5	6	
carpeting	✓						very good
coverings	✓						very good
cushion	✓						very good

## \* Legend grading

Note	Description	Definition
Note 1	Flawless	no defects, contamination, damage or signs of wear in terms of look and texture

Hüsches GmbH  
Ein Unternehmen der Hüsches Gruppe  
Bankverbindung  
Sparkasse Krefeld  
Kto.-Nr. 1048206 · BLZ 320 500 00

Halskestraße 20  
47877 Willich  
Tel.: (02154) 48 125 0  
Fax: (02154) 48 125 25  
Email:  
info@huesges-gruppe.de



Reg.-Nr.: Q1 0104082

Rechtsform: Gesellschaft  
mit beschränkter Haftung  
Sitz: Willich  
Registergericht: Krefeld HRB  
Steuer-Nr.: 102/5821/0943

Geschäftsführung:  
Arndt Hüsches  
Dipl.- Ing. (FH) Bernd Hüsches



Note 2	Good condition	defect-free, but with slight traces of use / soiling as they are unavoidable in normal use
Note 3	Used	with clear traces of use which make a preparation / cleaning necessary
Note 4	Used condition	Above-average signs of wear and tear that make intensive treatment / cleaning necessary
Note 5	condition in need of repair	Used condition with damages such as burning holes or soiling that require intensive, professional preparation and repair
Note 6	renewable condition	Damage or dirt that makes a replacement necessary



## sales reports

<b>customer:</b>	<b>BCA GmbH</b>
<b>report Number:</b>	<b>000000006850-EN98</b>
<b>contract number:</b>	.

vehicle data			
<b>BMW model range 3 Touring (E91) (2005-&gt;) 318i</b>			
Vehicle identification number	<b>WBAUS31090A531166</b>	mileage read:	<b>140583 km</b>
..			
First Registration / construction year:	<b>22.04.2010 / 2010</b>	Visit Date / place of birth:	<b>04.01.2018 Neuss</b>
Bodywork:	<b>cars</b>	Body type:	<b>hatchback</b>
KBA no. :	<b>0005//ALK</b>	Fuel / emission class:	<b>gasoline / -</b>
transmission type:	<b>6 speed manual transmission</b>	GPS sat nav disk:	<b>-</b>
Displacement / power:	<b>1995 ccm / 105 kW (143 PS)</b>	Engine:	<b>rear-wheel drive</b>
paint:	<b>SPACEGRAU METALLIC</b>	type of paint:	<b>-</b>
Number of previous owners:	<b>2</b>	Doors / seats:	<b>5 / 5</b>
number keys:	<b>2</b>	Next HU / AU:	<b>- / -</b>
cushion type:	<b>substance</b>	Service book available:	<b>no</b>
Interior Color:	<b>black</b>	Maintained service book:	<b>-</b>
smoking vehicle:	<b>no</b>	Last service km / on the:	<b>- / -</b>
drivebelt change km / on the:	<b>- / -</b>	Vehicle roadworthy:	<b>yes</b>
Vehicle roadworthy:	<b>yes</b>	Submitted vehicle documents:	<b>-</b>
state outside:	<b>4 - moderate</b>	condition inside:	<b>3 - Average</b>

mounted tires		
Tyre / wheel type:	<b>summer tires</b>	<b>aluminum</b>
1st axis - Left / states .	<b>Michelin</b>	<b>205/55/R16/91H 3 mm</b>
1st axis - right / states .	<b>Michelin</b>	<b>205/55/R16/91H 3 mm</b>
2nd axis - Left / states .	<b>Michelin</b>	<b>205/55/R16/91H 2 mm</b>
2nd axis - right / states .	<b>Michelin</b>	<b>205/55/R16/91H 2 mm</b>
traffic Safety:	<b>roadworthy</b>	
spare wheel:	<b>Tirefit</b>	
state spare wheel:	<b>-</b>	

The sales reports was created impartially and to the best of my knowledge. The images listed in the sales reports are part of the vehicle description regarding the equipment and the vehicle condition.





**standard equipment**

<ul style="list-style-type: none"> <li>• Airbag Driver / passenger side</li> <li>• Anti- lock braking system ( ABS)</li> <li>• heated exterior mirrors <i>Windscreen washer nozzles heatable</i></li> <li>• White direction indicator lights</li> <li>• Brake Energy Regeneration</li> <li>• Rev counter</li> <li>• Exterior parts car color</li> <li>• Control for central locking</li> <li>• Transmission 6-speed</li> <li>• Interior interior trim Satin Silver</li> <li>• Body 5-door</li> <li>• Head airbag system front</li> <li>• Steering column (steering wheel ) mechan. adjustable</li> <li>• model refinement</li> <li>• Multifunction for steering wheel</li> <li>• Tire Pressure Monitoring System</li> <li>• Rear seat backrest split / folding</li> <li>• Controlled power steering electronically</li> <li>• Front seats mechanically adjustable <i>Front seats height adjustable</i></li> <li>• Tinted heat insulating glass</li> </ul>	<ul style="list-style-type: none"> <li>• Active head restraints</li> <li>• Power side mirrors . adjustable</li> <li>• Body color door mirrors</li> <li>• board computer <i>outside temperature display</i></li> <li>• Check Control System</li> <li>• Dynamic Stability Control (DSC )</li> <li>• Electric windows front + rear</li> <li>• Velour floor mats</li> <li>• LED Taillights</li> <li>• Isofix admissions for child seat in back seat</li> <li>• Rear curtain airbag system</li> <li>• Headrests rear mech . adjustable ( 3 pieces)</li> <li>• Rear center armrest</li> <li>• Engine 2.0 ltr. - 105 kW 16V</li> <li>• Fog Lights</li> <li>• Tyre Defect Indicator</li> <li>• Front Side Airbags</li> <li>• Seat cover / upholstery fabric vertex</li> <li>• Body color bumpers</li> <li>• Central locking with theft and crash sensor</li> </ul>
---	--

**special Features**

<ul style="list-style-type: none"> <li>• Filing package</li> <li>• roof rails</li> <li>• LM rims 7x16 ( Double-spoke style 268 )</li> <li>• Metallic paint</li> <li>• Heated front seats</li> </ul>	<ul style="list-style-type: none"> <li>• Comfort Package <i>Automatic headlight control, light and rain sensor, wiper with rain sensor, audio system BMW Professional (radio/ CD player), Park-Distance-Control (PDC), speed control system (cruise control), centre armrest adjustable at the front, automatic climate control extended circumference, interior mirror with automatic dipping function</i></li> <li>• Rear headrests folding</li> <li>• Steering wheel (sports / leather) <i>Shift/selecter lever handle, leather</i></li> <li>• Smokers Package</li> </ul>
---	--

**damage**



**component**

1.	Front bumper	Scratch(es)
----	--------------	-------------

- |    |   |                      |
|----|---|----------------------|
| 2. | Front fender - left                     | Scratch(es)          |
| 3. | Front door - left                       | Wear and tear        |
| 4. | side skirt - left                       | Scratch(es)          |
| 5. | Sidewall - Rear - right                 | Scratch(es)          |
| 6. | exterior rear view mirror shell - right | Scratch(es)          |
| 7. | hood                                    | Chipping from stones |

#### General examination

**test drive:**

**carried Out**

It was carried out with the described vehicle for a test drive . As part of the test drive further tests were carried out. The results are documented later in the report .

**Subfloor Inspection:**

**Conducted limited**

To investigate the vehicle (ä . Lift o . ) Were not lifting means even a ramp or pit available. For this reason, a visit to the vehicle's underside was limited.

**reference:**

**Note Road Safe:**



In the further course you will receive the result of the run performance analysis. Whether the mileage of your vehicle is manipulated, you will find in the report (created in cooperation with Carly GmbH - [www.mycarly.com](http://www.mycarly.com))

#### OBD\_II

**Test for Mileagemanipulation successfully completed:**  yes

**Mileage manipulated:**  no

#### Accident injury assessment

**Rep. Predamages / -height gross:** **no detectable**

As part of a paint film thickness measuring the body outer skin no previous damage could be detected .

<b>Layers of paint thickness measurement:</b>	<b>Within the tolerances</b> At the vehicle , a resist layer thickness measurement was carried out on the body outer skin. The measured values ??were within the tolerances of original finishes . Evidence that points to a repaired accident damage or repainting carried out , were identified.
<b>Existing collision damage:</b>	<b>Not established</b> On the vehicle body shell were on visual examination found no existing accident damages (other than the usual signs of use) .
<b>reference:</b>	

A previous damage check solely in the context and the possibilities of a visual inspection and measurement of paint layers without a Disassembly of components. A possible previous damage check is unknown.

Overview conducted technology audit			
<b>Alternator / Generator:</b>	✓ in order	<b>Battery / accumulator:</b>	✓ in order
<b>oil loss:</b>	✓ examined limited		
<b>air conditioning:</b>	✓ in order	<b>lighting system:</b>	✓ in order
<b>navigation system:</b>	✗ non-existent	<b>Sunroof / convertible:</b>	✗ unavailable
<b>brake system:</b>	✓ examined limited	<b>coupling:</b>	✓ in order
<b>exhaust System:</b>	✓ examined limited	<b>engine running:</b>	✓ in order
<b>shock absorber:</b>	✓ examined limited	<b>transmission:</b>	✓ in order
<b>vehicle ads:</b>	✓ in order		

Performed testing technology	
<b>Alternator / Generator:</b>	The function of the alternator (generator) was tested using the charging indicator light in the instrument cluster .
<b>Battery / accumulator:</b>	The battery (accumulator) was examined during the inspection .
<b>oil loss:</b>	The vehicle could be checked only limited to oil leaks .
<b>air conditioning:</b>	A function of the air conditioning was found to visiting time .
<b>lighting system:</b>	The lighting system was to tour date in order.
<b>navigation system:</b>	non-existent
<b>Sunroof / convertible:</b>	unavailable
<b>brake system:</b>	The braking system has been tested by a visual inspection .
<b>coupling:</b>	The coupling was examined during the test drive / pull test .
<b>exhaust System:</b>	The exhaust system has been tested only restricted during the visit .
<b>engine running:</b>	A field test of the engine was performed.

<b>shock absorber:</b>	The shock absorber could be tested only restricted during the visit .
<b>transmission:</b>	The transmission was examined during the test drive / pull test .
<b>vehicle ads:</b>	For sightseeing time there were no abnormalities in the test vehicle ads .
<b>reference:</b>	*

photographic record



front Left



front Right



rear Left



rear Right



inside



inside



trunk



mileage



rims



engine compartment



Others



interior rear



1. Front bumper

Scratch(es)



1. Front bumper

Scratch(es)



2. Front fender - left

Scratch(es)



2. Front fender - left

Scratch(es)



3. Front door - left

**Wear and tear**



3. Front door - left

**Wear and tear**



4. side skirt - left

**Scratch(es)**



4. side skirt - left

**Scratch(es)**



5. Sidewall - Rear - right

**Scratch(es)**



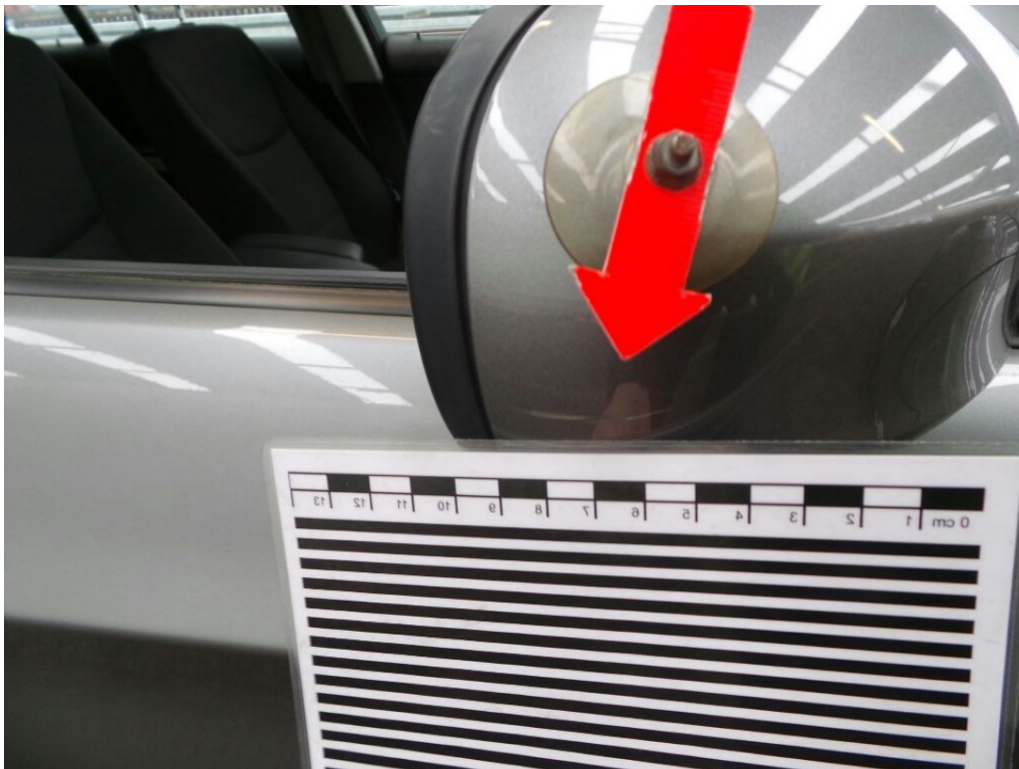
5. Sidewall - Rear - right

**Scratch(es)**



6. exterior rear view mirror shell - right

**Scratch(es)**



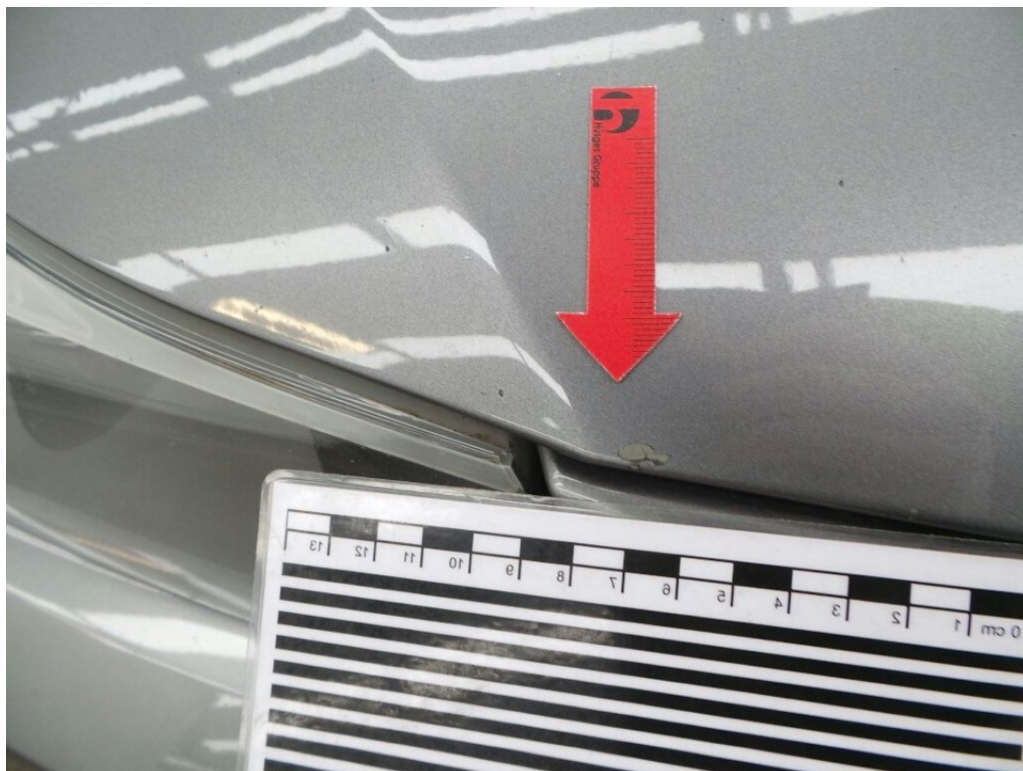
6. exterior rear view mirror shell - right

**Scratch(es)**



7. hood

Chipping from stones



7. hood

Chipping from stones